



JobsOhio
Q2•2015
QUARTERLY REPORT

During Q2 2015, JobsOhio and its statewide partners successfully worked with 90 companies that committed to create or retain 18,122 jobs for Ohioans and make \$2.6 billion in capital investments.

Metrics snapshot

JobsOhio focuses its economic development efforts on a diverse portfolio of targeted industries and business functions that drive the state's economy and have the greatest impact on job creation. Projects announced in the second quarter represent companies' job creation and capital investment commitments to be completed in Ohio over the next three years.

Q2 2015 RESULTS	
Total # of Projects	90
New Jobs	5,436
New Jobs Payroll	\$248 million
Retained Jobs	12,686
Retained Jobs Payroll	\$630 million
Total Jobs	18,122
Total Jobs Payroll	\$879 million
Capital Investment by Companies	\$2.6 billion
% of Projects: Investments Break-even in Year One (76 out of 90)	84%









	Q2 2014	Q3 2014	Q4 2014	Q1 2015	Q2 2015
Total # of Projects	75	54	73	76	90
New Jobs	7,370	5,000	3,285	3,980	5,436
Total Jobs	24,369	13,232	15,609	12,024	18,122
Total Jobs Payroll	\$1.2 B	\$652 M	\$976 M	\$679 M	\$879 M
Capital Investment	\$968 M	\$676.7 M	\$2.8 B	\$1.5 B	\$2.6 B

Commitments by companies

Total jobs numbers can vary from quarter-to-quarter based on how many projects involved large employers.

Q2 METRICS BY TARGETED INDUSTRY

Of the 5,436 new job commitments from the second quarter of 2015, 76 percent came from existing Ohio companies while 24 percent came from attraction projects. At the same time, 83 percent of the total \$2.6 billion in capital investment came from attraction projects¹. These results reflect JobsOhio's aggressive attraction effort to bring new businesses and jobs to the state, while maintaining strong relationships with our existing Ohio companies.

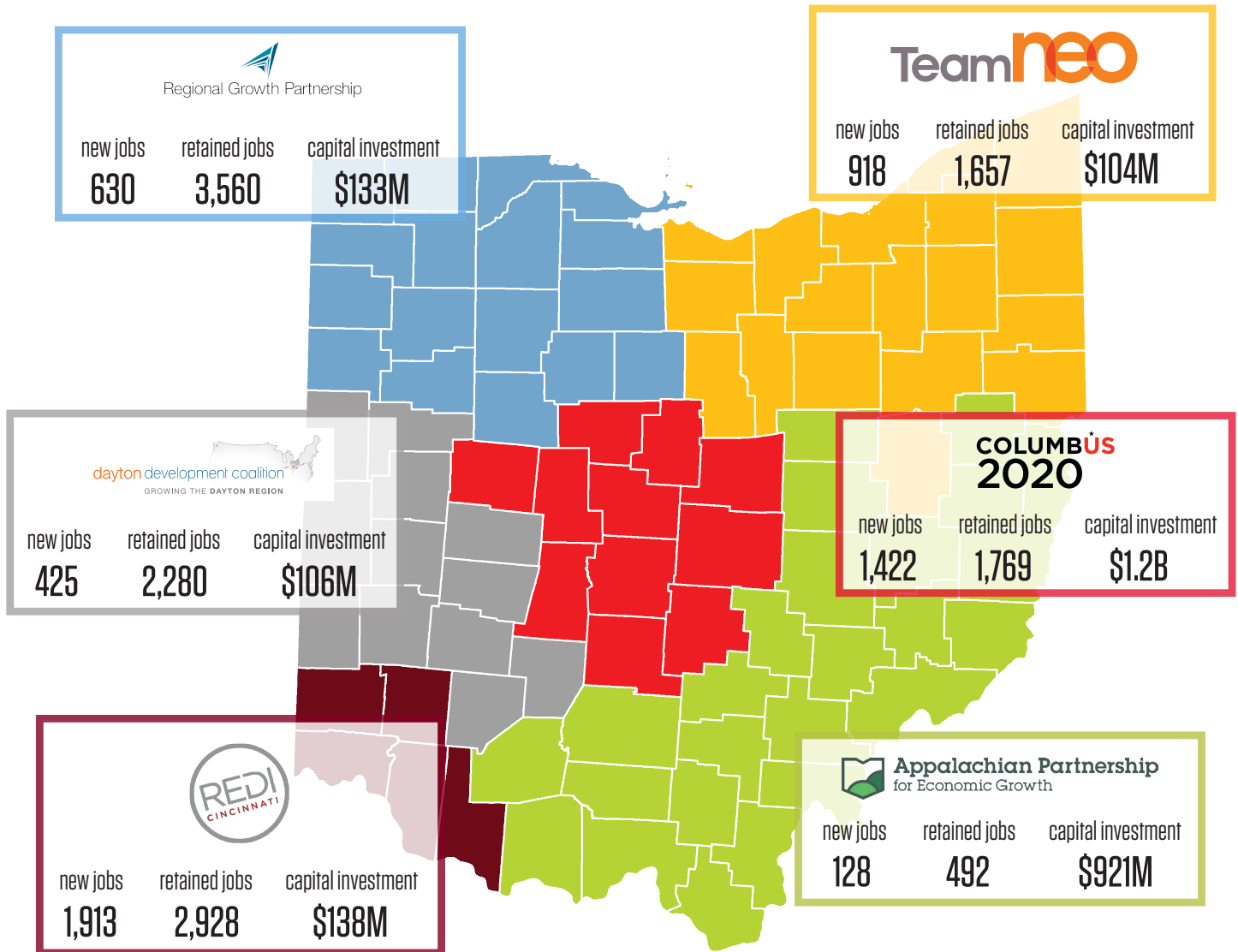
INDUSTRIES	JOBBS CREATED	JOBBS RETAINED	CAPITAL INVESTMENT
 Advanced Manufacturing	1,889	7,013	\$207 Million
 Food Sciences & Agriculture	941	1,992	\$179 Million
 Logistics & Distribution	675	352	\$30 Million
 Biohealth	659	1,178	\$87 Million
 Automotive	407	878	\$73 Million
 Information Services & Software	352	137	\$1.1 Billion
 Shale Energy & Petrochemicals	203	617	\$910 Million
 Aerospace	40	4	\$2 Million
Other ²	270	515	\$1 Million

¹Vadata accounts for \$1.1 billion of total attraction

²Represents: Headquarters, Back Office, and Research & Development

JobsOhio Network Partners

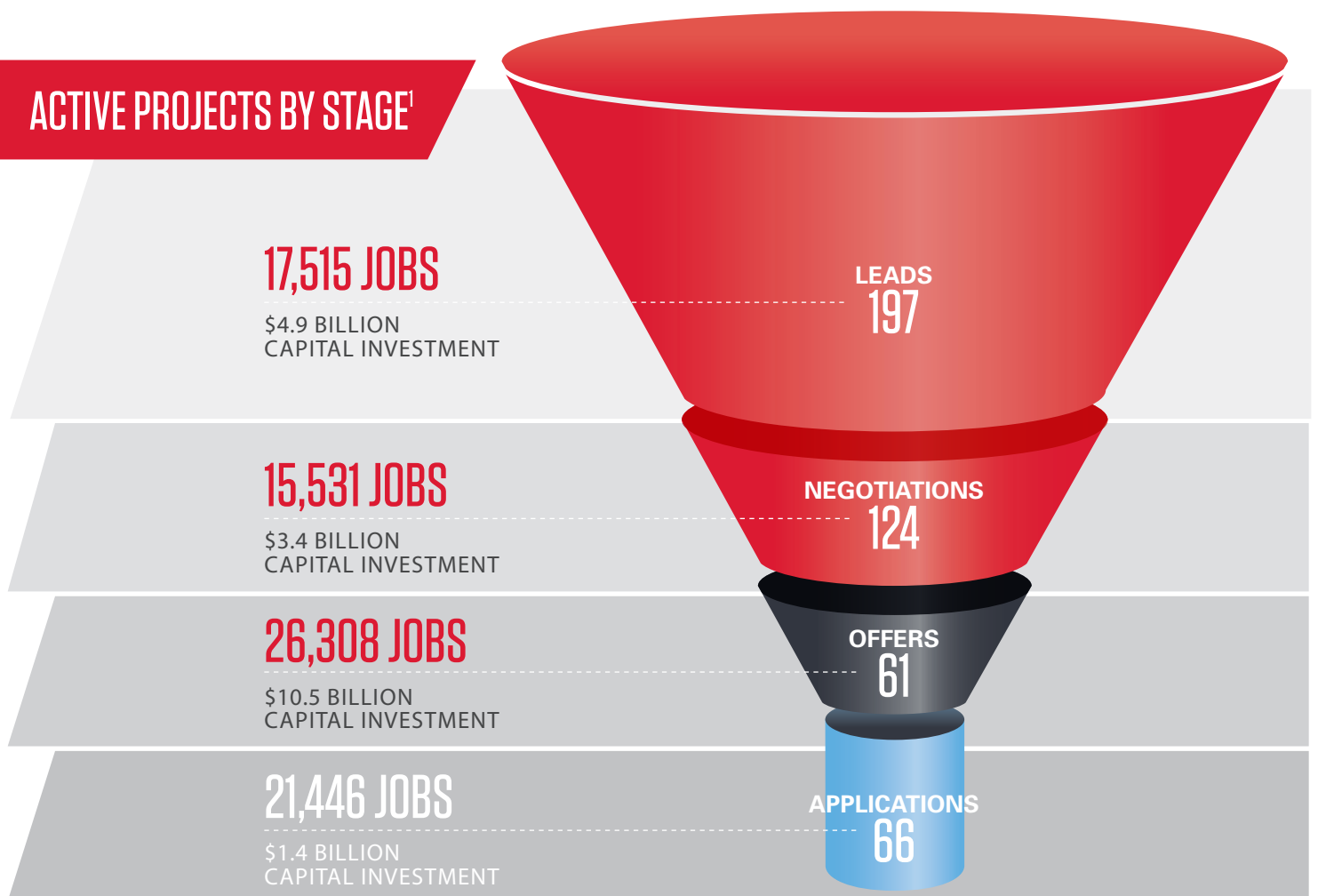
Ohio's regional economic development partners, known collectively as the JobsOhio Network, help JobsOhio drive job creation and new capital investment throughout the state. With deep ties to local business communities, the six-region Network provides the necessary connectivity to achieve a "One Firm, One State" collaborative approach to selling Ohio.



*Totals do not reflect possible post-report modifications.

Project pipeline

The pipeline represents the potential deals that JobsOhio and its state and regional partners are working on to create job opportunities and capital investment in Ohio. This tool allows us to analyze data, view trends, and develop strategies.



Data as of July 31, 2015

¹Potential results if all projects are realized
Includes new and retained jobs

- Lead** JobsOhio engages with companies on projects that were previously prospects
- Negotiation** JobsOhio begins structuring a proposal for the project
- Offer** Company receives commitment letter outlining the project details
- Application** Company begins the formal process to finalize the project

SELECTED Q2 PROJECTS

Companies made significant job and capital investment commitments across multiple industries throughout Ohio during Q2 2015. These examples reflect the kinds of economic development successes Ohio is experiencing because of the collaborative efforts of JobsOhio, its regional network, and the many partners at the local level.

Company	Region	Jobs Created	Capital Investment	Industry or Business Function	Project Type
Union Tank Car Company	Central	200	\$10 M	Advanced Manufacturing	Expansion
Valeo North America, Inc.	Central	85	\$14 M	Automotive	New Location
Vadata, Inc.	Central	120	\$1.1 B	Information Services	New Location
Next Generation Films, Inc.	Northeast	100	\$31 M	Advanced Manufacturing	Expansion
Cable Manufacturing & Assembly, Inc.	Northeast	51	\$205 K	Advanced Manufacturing	Expansion
GOJO Industries	Northeast	244	\$43.1 M	Biohealth	New Location
Nelson Packaging Company, Inc.	Northwest	140	\$10.3 M	Advanced Manufacturing	Expansion
Tower Automotive Operations USA I, LLC	Northwest	138	\$32 M	Automotive	Expansion
American Tire Distributors, Inc.	Northwest	53	\$15 M	Logistics & Distribution	Expansion
Speyside Bourbon Cooperage, Inc.	Southeast	35	\$17 M	Advanced Manufacturing	New Location
Advanced Power North America	Southeast	30	\$899 M	Shale Energy & Petrochemicals	New Location
Airtech, LLC	Southwest	40	\$1.9 M	Aerospace & Aviation	Expansion
The Kroger Co.	Southwest	649	\$46 M	Food Sciences & Agriculture	Consolidation
Peter Cremer North America, L.P.	Southwest	122	\$9 M	Shale Energy & Petrochemicals	Expansion
Ahresty Wilmington Corporation	West	100	\$23.1 M	Advanced Manufacturing	Expansion
Cargill, Inc.	West	55	\$55 M	Food Sciences & Agriculture	Expansion

*Totals do not reflect possible post-report modifications.

JobsOhio Network Partners

