



JobsOhio
Q1•2015
QUARTERLY REPORT

During Q1 2015, JobsOhio and its statewide partners successfully worked with more than 73 companies that committed to create or retain 12,024 jobs for Ohioans and make \$1.5 billion in capital investments.

Metrics snapshot

JobsOhio focuses its economic development efforts on a diverse portfolio of targeted industries and business functions that drive the state's economy and have the greatest impact on job creation. Projects announced in the first quarter represent companies' job creation and capital investment commitments to be completed in Ohio over the next three years.

Q1 2015 RESULTS	
Total # of Projects	76
New Jobs	3,980
New Jobs Payroll	\$181 million
Retained Jobs	8,044
Retained Jobs Payroll	\$499 million
Total Jobs	12,024
Total Jobs Payroll	\$680 million
Capital Investment by Companies	\$1.5 billion
% of Projects: Investments Break-even in Year One (63 out of 76)	83%








Q1 2015 RESULTS	Q1 2014	Q2 2014	Q3 2014	Q4 2014	Q1 2015
Total # of Projects	84	75	54	73	76
New Jobs	5,722	7,370	5,000	3,285	3,980
Total Jobs	20,307	24,369	13,232	15,609	12,024
Total Jobs Payroll	\$1.0 B	\$1.2 B	\$652 M	\$976 M	\$679 M
Capital Investment	\$1.7 B	\$968 M	\$676.7 M	\$2.8 B	\$1.5 B

Commitments by companies

Total jobs numbers can vary from quarter-to-quarter based on how many projects involved large employers.

Q1 METRICS BY TARGETED INDUSTRY

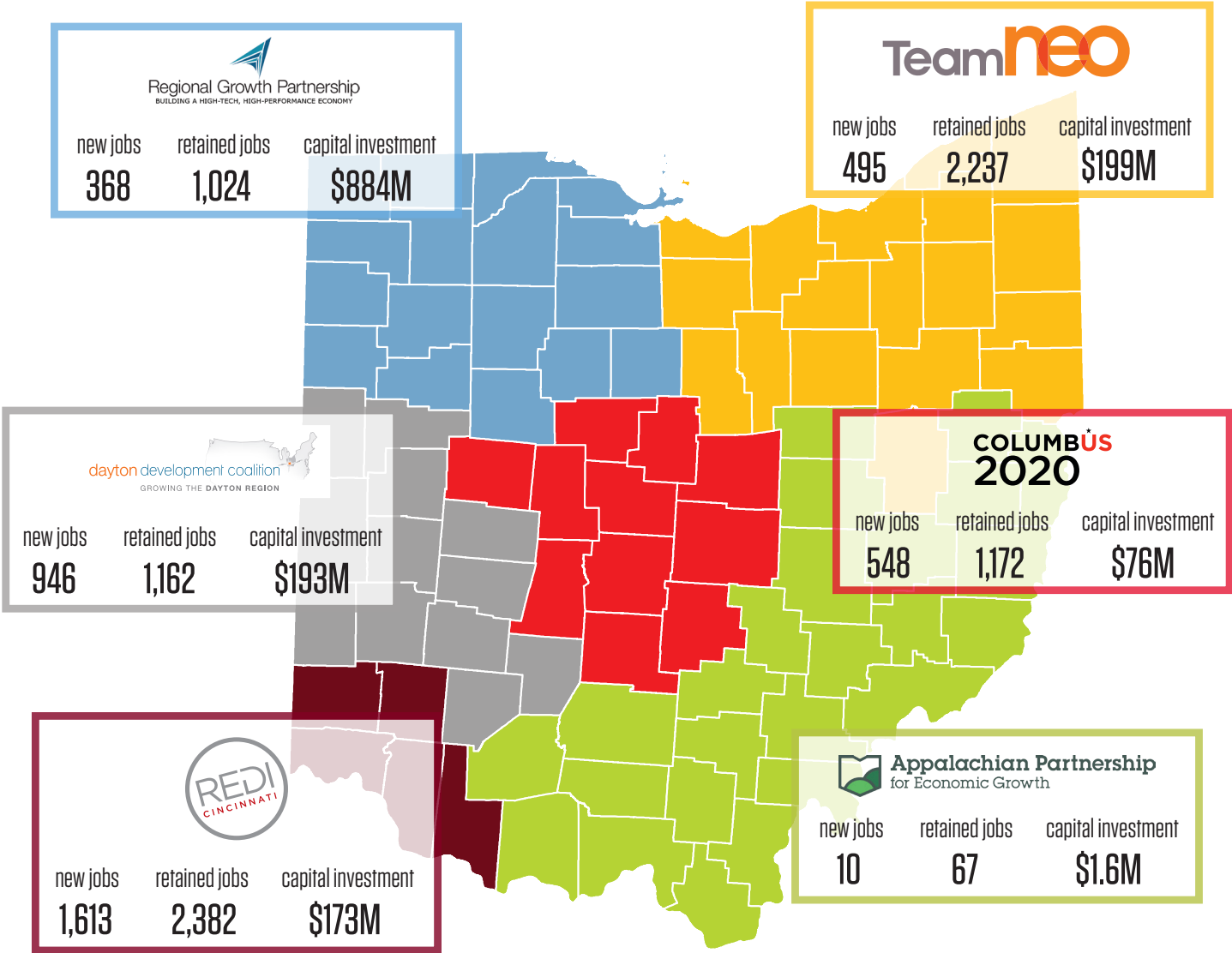
Of the 3,980 new job commitments from the first quarter of 2015, 73 percent came from existing Ohio companies while 27 percent came from attraction projects. At the same time, more than half (64 percent) of the total \$1.5 billion in capital investment came from attraction projects. These results reflect JobsOhio's aggressive attraction effort to bring new businesses and jobs to the state, while maintaining strong relationships with our existing Ohio companies.

INDUSTRIES	JOBBS CREATED	JOBBS RETAINED	CAPITAL INVESTMENT
 Automotive	1,030	1,374	\$298 Million
 Advanced Manufacturing	824	3,201	\$133 Million
 Information Services & Software	779	37	\$1 Million
 Shale Energy & Petrochemicals	391	1,065	\$977 Million
 Biohealth	305	702	\$37 Million
 Logistics & Distribution	104	153	\$8.2 Million
 Food Sciences & Agriculture	56	175	\$9.2 Million
Other ¹	491	1,337	\$61.8 Million

¹Represents: Headquarters, Back Office, and Research & Development

JobsOhio Network Partners

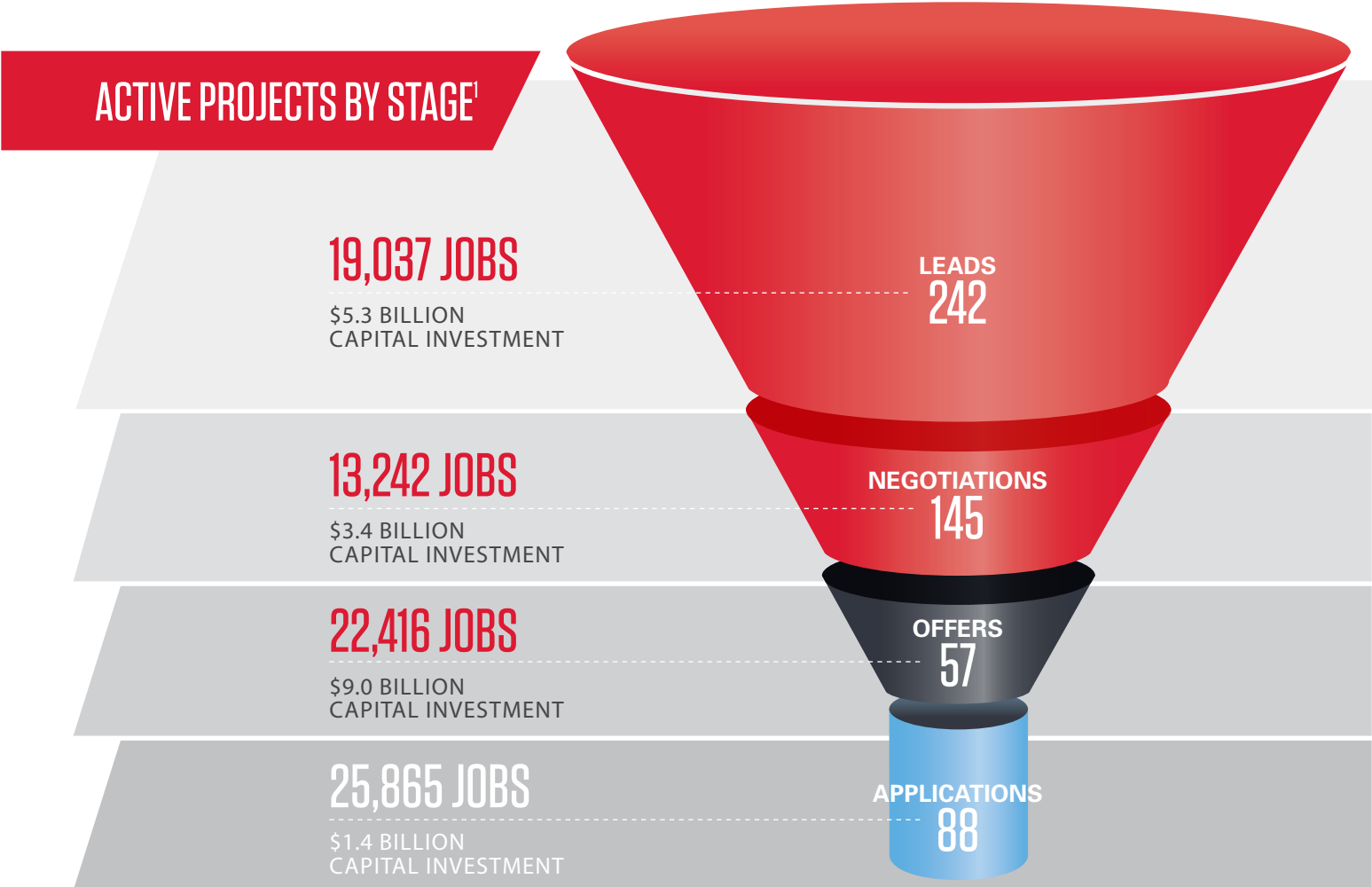
Ohio’s regional economic development partners, known collectively as the JobsOhio Network, help JobsOhio drive job creation and new capital investment throughout the state. With deep ties to local business communities, the six-region Network provides the necessary connectivity to achieve a “One Firm, One State” collaborative approach to selling Ohio.



*Totals do not reflect possible post-report modifications.

Project pipeline

The pipeline represents the potential deals that JobsOhio and its state and regional partners are working on to create job opportunities and capital investment in Ohio. This tool allows us to analyze data, view trends, and develop strategies.



Data as of March 31, 2015

¹Potential results if all projects are realized
Includes new and retained jobs

- Lead** JobsOhio engages with companies on projects that were previously prospects
- Negotiation** JobsOhio begins structuring a proposal for the project
- Offer** Company receives commitment letter outlining the project details
- Application** Company begins the formal process to finalize the project

SELECTED Q1 PROJECTS

Companies made significant job and capital investment commitments across multiple industries throughout Ohio during Q1 2015. These examples reflect the kinds of economic development successes Ohio is experiencing because of the collaborative efforts of JobsOhio, its regional network, and the many partners at the local level.

Company	Region	Jobs Created	Capital Investment	Industry or Business Function	Project Type
Fuyao Glass America Inc.	West	750	\$130 M	Automotive	New Location
Startek USA, Inc.	Southwest	682	-	Information Technology	New Location
Intelligrated Systems, LLC	Southwest	238	\$12.2 M	Advanced Manufacturing	Expansion
The Gorilla Glue Company	Southwest	110	\$26.5 M	Shale & Petrochemicals	Expansion
Mitsubishi Electric Automotive America, Inc.	Southwest	100	\$80.8 M	Automotive	Expansion
Masters Pharmaceutical, Inc.	Southwest	100	\$17.5 M	Biohealth	Expansion
Valfilm, LLC	Northwest	80	\$9.5 M	Advanced Manufacturing	Acquisition
Liqui-Box Corporation	Northeast	67	\$175 K	Shale & Petrochemicals	Expansion
Alkermes, Inc.	West	51	\$18.9 M	Biohealth	Expansion
Benchmark Education Company, LLC	Central	49	\$300 K	Logstics and Distribution	New Location
Frutarom USA Inc.	Southwest	45	\$3.1 M	Food Sciences & Agriculture	Expansion
Hirschvogel Inc.	Central	37	\$50.3 M	Automotive	Expansion
Auto Soft, Inc.	West	25	\$350 K	Information Technology	Expansion
Oregon Clean Energy LLC	Northwest	25	\$800 M	Shale & Petrochemicals	New Location
Innovative Medical Equipment, LLC	Northeast	18	-	Biohealth	Expansion
Umicore Specialty Materials Recycling, LLC	Northeast	15	\$20 M	Shale & Petrochemicals	Redevelopment

JobsOhio Network Partners

